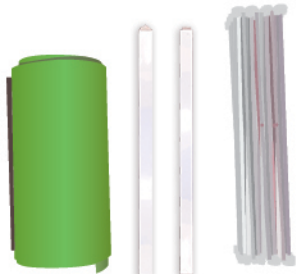


4x3 Curved Pop-up Display Installation Guide

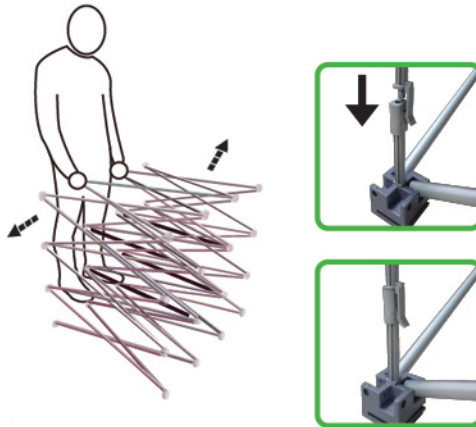
Step 1. Take out the pop-up display



Graphic Bracket Stand

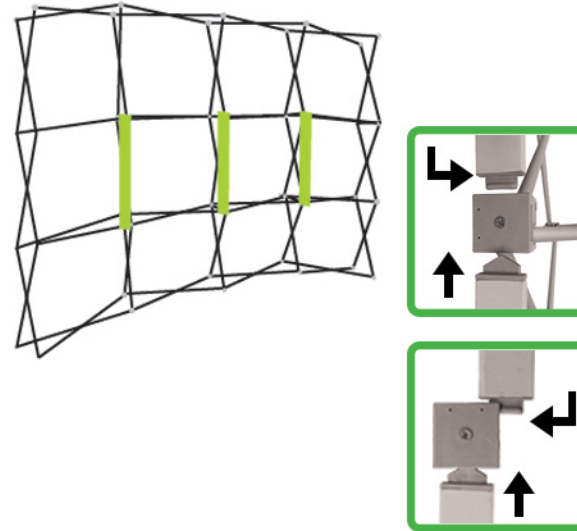
Bracket: 15 Convex

Step 2. Lay the stand and pull outward to expand

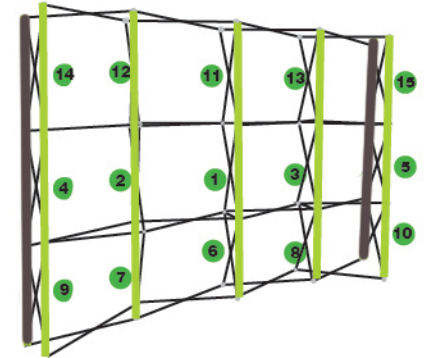


Note: DO it on the flat floor

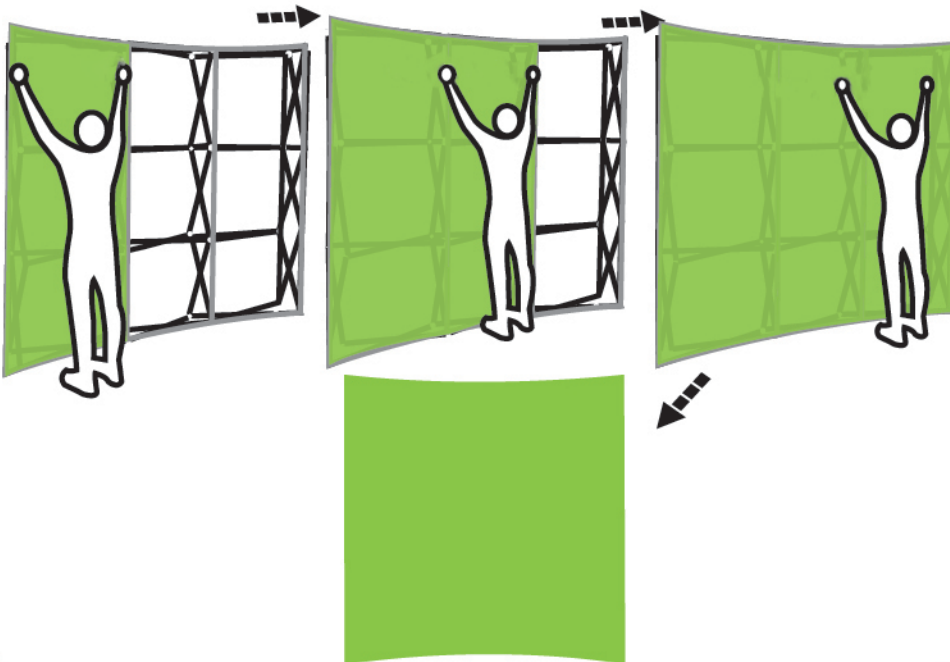
Step 3. Install three brackets in the center of stand



Step 4. Install all brackets in order



Step 5. Attach the graphic to stand from left to right



Step 6. Install the curved sides (if any)

